



Aspose.Words

**Gekom**

Gekom uses Aspose.Words for .Net to generate invoices from user input, including company logo

24/10/2010

## About

Gekom is an online web application that offers small companies and freelancers a secure, reliable and easy way to manage their customers' quotes and invoices wherever they are. Gekom customers can quickly create then download an invoice in order to send it by e-mail or print it out.

## Brief Description of Demo

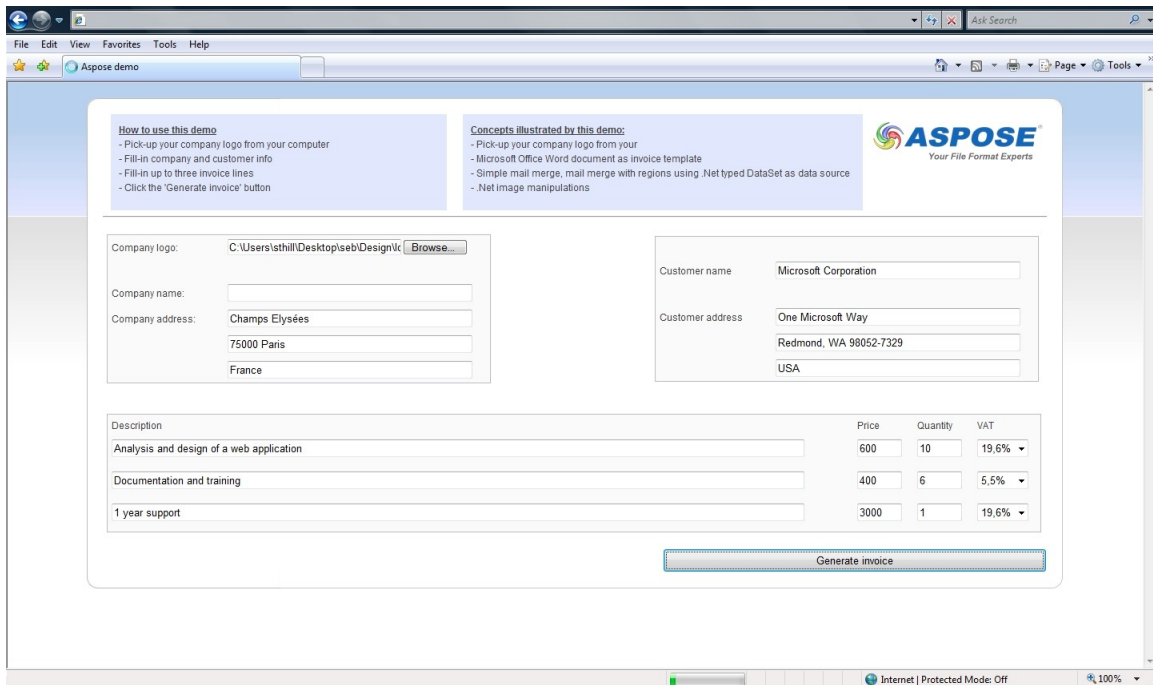
The purpose of the demo is to show how simple it is to generate a document (including images) from user input with the help of Aspose components.

## Extended Description

During the development of Gekom, one of the major difficulties was to find the right way to handle the document generation. While using a database engine to store user input is a very common issue that is not difficult for a developer to solve, document generation is a much less straightforward task. The main requirements while building Gekom were:

- To generate invoices from both user input and database records
- To include images such as company logos on invoices
- To be able to manage invoice templates easily

The third requirement was probably the most interesting to solve: the question was how to use Microsoft Word for authoring templates without using Microsoft Word for generating invoices? After several tries and non-convincing results, the answer was found: Aspose.Words.



**How to use this demo**

- Pick-up your company logo from your computer
- Fill-in company and customer info
- Fill-in up to three invoice lines
- Click the 'Generate invoice' button

**Concepts illustrated by this demo:**

- Pick-up your company logo from your
- Microsoft Office Word document as invoice template
- Simple mail merge, mail merge with regions using .Net typed DataSet as data source
- .Net image manipulations

**ASPOSE**  
Your File Format Experts

Company logo: C:\Users\sthill\Desktop\eeb\Design\lc (Browse...)

Company name:

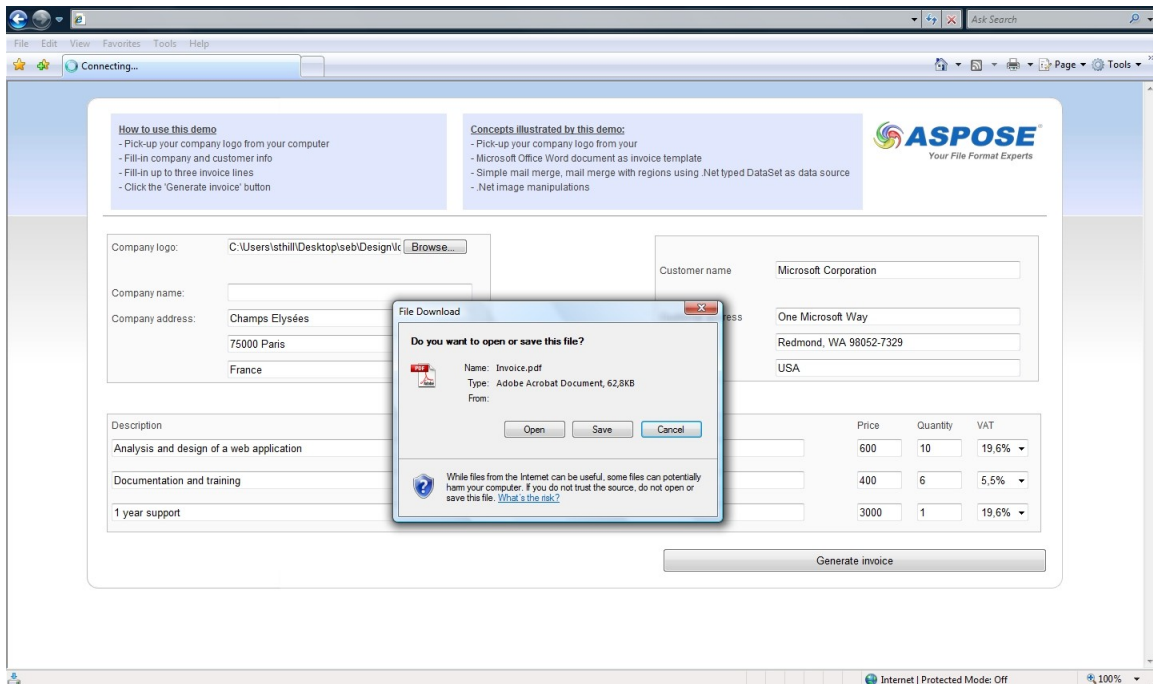
Company address:  Champs Elysées  
 75000 Paris  
 France

Customer name:  Microsoft Corporation

Customer address:  One Microsoft Way  
 Redmond, WA 98052-7329  
 USA

Description	Price	Quantity	VAT
Analysis and design of a web application	600	10	19,6%
Documentation and training	400	6	5,5%
1 year support	3000	1	19,6%

Figure 1: collecting user input from within an asp.net web form



**How to use this demo**

- Pick-up your company logo from your computer
- Fill-in company and customer info
- Fill-in up to three invoice lines
- Click the 'Generate invoice' button

**Concepts illustrated by this demo:**

- Pick-up your company logo from your
- Microsoft Office Word document as invoice template
- Simple mail merge, mail merge with regions using .Net typed DataSet as data source
- .Net image manipulations

**ASPOSE**  
Your File Format Experts

Company logo: C:\Users\sthill\Desktop\eeb\Design\lc (Browse...)

Company name:

Company address:  Champs Elysées  
 75000 Paris  
 France

Customer name:  Microsoft Corporation

Customer address:  One Microsoft Way  
 Redmond, WA 98052-7329  
 USA

Description	Price	Quantity	VAT
Analysis and design of a web application	600	10	19,6%
Documentation and training	400	6	5,5%
1 year support	3000	1	19,6%

**File Download**

Do you want to open or save this file?

Name: Invoice.pdf  
 Type: Adobe Acrobat Document, 62,8KB  
 From: [What's the risk?](#)

Figure 2: download the invoice once it has been generated server-side

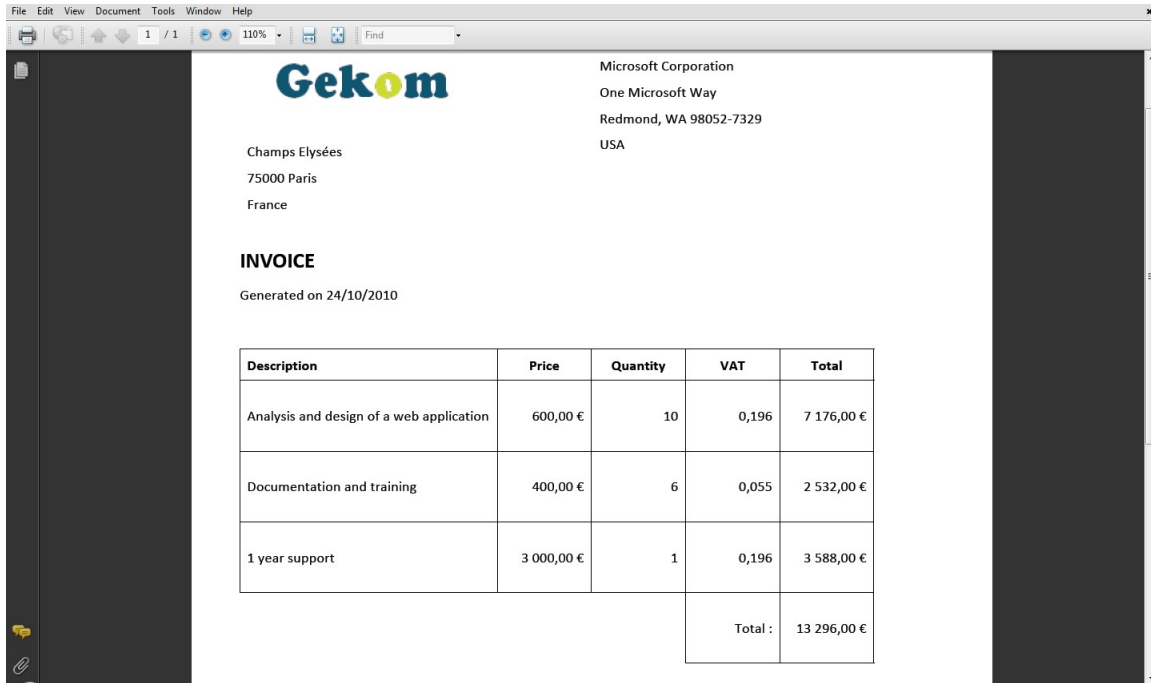


Figure 3: the result is a tailor-made invoice showing the chosen company logo

## Actors

This scenario is performed daily by all users of the application.

## Products Used

Aspose.Words for .Net has been used to build this use case into an Asp.Net web application written in C#. The following functionalities of Aspose are used:

- Simple mail merge using Microsoft Word template
- Mail merge with regions
- Image merge fields
- Save Word document as PDF

## Future Implementations

Aspose.Words for .Net provided a so simple solution to my main requirement (that was to be able to manage templates using Microsoft Word), that I am seriously considering extending the use of their components. I could, for example, provide the end-users with a way to generate monthly Excel extracts using Aspose.Cells for .Net.

## Why Aspose?

As a software developer, I have been facing the document generation challenge several times, in several contexts. I have already been using:

- Word/SpreadsheetML in conjunction with XML data and XSLT transforms
- Office automation
- XSL-FO language and processors

I have never been convinced by any of these solutions: performance, easy templates management and data integration requirements were never met all together.

Now that I have implemented real-world scenarios using Aspose.Words, I know for the first time which components I will use next time!

## Conclusion

I am really convinced about the quality and the robustness of Aspose components, and would recommend every software developer to have a look at it.