



Aspose.Total for .NET



BP Logix Workflow Director

BP Logix Chooses .NET Component Publisher for New Product Version

Jay O'Brien, CTO, Nov 17, 2009

Product Background / Overview

BP Logix Inc. is a leading provider of web-based BPM and workflow solutions. The company is focused on software solutions that improve workflow and process automation, enabling users to maximize their efficiency and work as intelligently with digital content as they do with paper-based information.

In 2009, BP Logix released a new version of its flagship product, Workflow Director. This was the first 100% .NET release of this product, so choosing a partner for .NET components was critical for its timely release and success in the market.

Prior to development, BP Logix researched the .NET component market for many months, developing test cases and functional requirements. ASPOSE was selected as the component vendor for all document manipulation, including PDF transformation, Excel report generation, Microsoft Word parsing, and bar-code generation. The selection of ASPOSE and the subsequent development was a complete success. The functionality and design of ASPOSE Components, as well as the support of the ASPOSE team was key for developing our product on-time. The ASPOSE products saved many person-months of development effort.

Requirements Scenario

After meeting with customers, product managers, and development managers, a requirements document for our .NET document component library was written. The most important requirements are outlined below.

- 100% .NET compliant and .NET native (including .NET 3.5)
- Single library for 32-bit and 64-bit deployment
- Simple installation and distribution
- Royalty-free license
- Excellent support including searchable online forums, online samples, and online documentation
- Product stability
- No requirement to install MS Office applications on server
- No requirement to create special system services for PDF transformation
- PDF functionality
 - o Ability to convert .DOC, .DOCX, .PPT, .PPTX, .XLS, .XLSX into PDF
 - o Ability to convert text and images into PDF
 - o Ability to merge PDFs
 - o Ability to read and write PDF form fields
- Reporting Functionality

- Ability to generate Excel reports
- Ability to generate CSV reports
- Import functionality
 - Ability to import from Microsoft Excel documents
 - Ability to import from PDF forms

The ASPOSE components met or exceeded all of our requirements.

Solution Implementation

Our application is a web-based application built on top of IIS. The ASPOSE components were easily deployed into our application in the /Bin folder of the web application.

The component is transparently integrated into our application and can be configured by end users using Workflow Director Custom Tasks. As part of our document management capabilities, documents can automatically be rendered into PDF as they are added to the document library. Electronic Forms can now be rendered into PDF for archive or email use. Key Performance Indicators (KPIs) and analytical information can be created using Excel Template reports.

Benefits

BP Logix benefitted in multiple ways from selected ASPOSE. In previous versions of our product, we used a different component provider for PDF manipulation / conversion. We learned from our history how important support and stability are with component vendors. The support offerings from ASPOSE have been outstanding! There are clear examples for each component, up to date documentation, and very active forums. The product stability has been excellent. As a software vendor, I know how important it is to listen to your customers ... I can say that ASPOSE shines in this area as they continue to update their components with new features based on input from its customers.

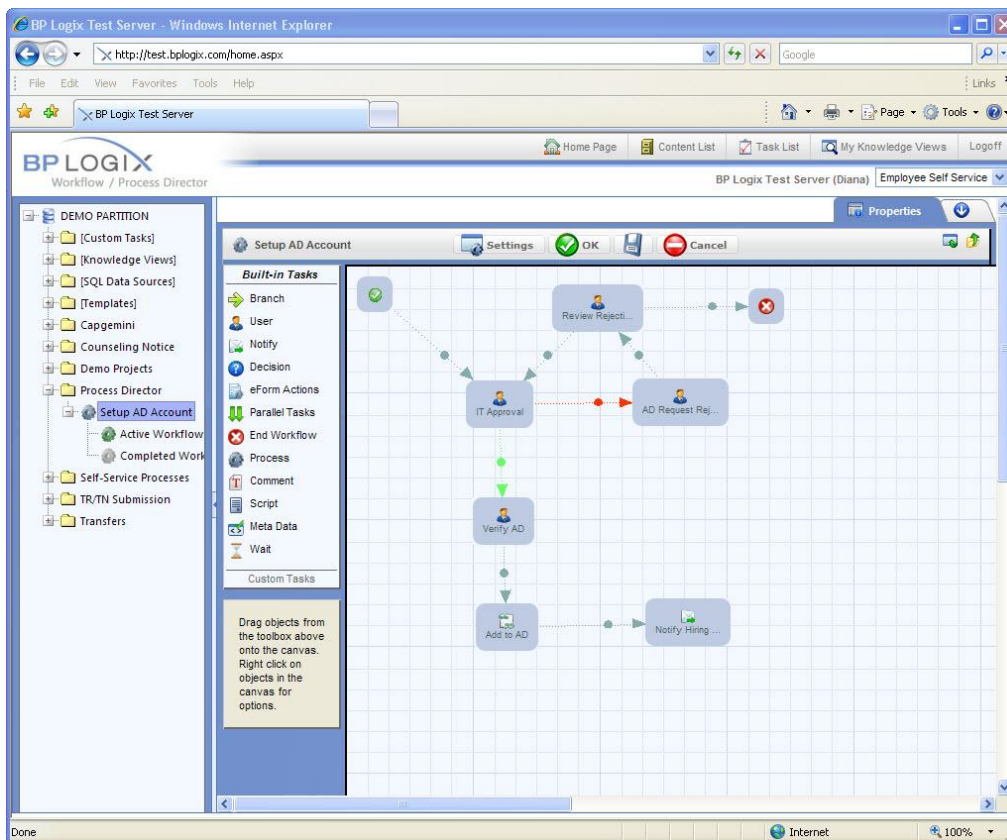
Another benefit of switching to ASPOSE has been their product design and architecture. Previously, we used a component that required MS Office to be installed and configured on the server, and various system services to be running. This was a nightmare to support! With ASPOSE's 100% .NET implementation, installing at customers is as easy as deploying a .DLL into the /Bin folder. It has cut our support expenses tremendously and has eliminated any of our customer frustration from our previous component vendor.

Future Implementations

One of the most exciting things about the ASPOSE components is how feature rich they are. In all honesty, we have only scratched the surface of the functionality available within the components. We will be looking to leverage the capabilities of the Microsoft Project import / export as well as the Flash components.

Conclusion

Selecting the ASPOSE components for file processing functionality was critical for our timely release of the Workflow Director product.



A simple Workflow built using Workflow Director

BP Logix eForm - Windows Internet Explorer
http://test.bpllogix.com/form.aspx?pd=65463560-2744-4c57-9bdf-532909499674&omid=6fomnid=43c83c9b-f2a-4c44-a816-b8b748502015&id=6wfnrid=561c92ad-ea2f-4a96-a093-d6d25f567bd8&grntid=6testmode=6CTConfigure=6CTRunnet

BP LOGIX Invoice Approval

Invoice Data

Invoice Type: SPO

PO #: 1

PO Amount: \$480.00

Vendor #: 464

Vendor Name: VeriSign

Invoice #:

Invoice Amount: \$480.00

Invoice Date: 10/26/2009

Due Date:

Comments:

Add Comment

Invoice

Quote.pdf View Download Remove 10/26/2009 9:48 PM

Find

VeriSign
The Value of Trust™

REMIT TO:
VERISIGN, INC.
75 REMITTANCE DRIVE, SUITE 1689
CHICAGO IL 60675-1689
UNITED STATES
1-877-GET-VERISIGN (1-877-438-8776)

BILL TO:
IMARKUP SOLUTIONS
640 ESCONCADO AVE
STE 104
VISTA CA 92084-4166
UNITED STATES

SHIP TO:
O
IMARKUP SOLUTIONS
640 ESCONCADO AVE
STE 104
VISTA CA 92084-4166
UNITED STATES

Issued For: IMARKUP SOLUTIONS, INC.

| LINE NO. | PART NUMBER/DESCRIPTION | QUANTITY | | UNIT PRICE | EXTENDED PRICE |
|----------|-------------------------|----------|---------|------------|----------------|
| | | ORDERED | SHIPPED | | |
| 1 | CODESIGNER STANDARD | 1 | 1 | 400.00 | 400.00 |

INVOICE # 1130215956

| | |
|----------------------------------|----------------------|
| Invoice Date: 08-SEP-04 | Due Date: 08-SEP-04 |
| Terms: VISA/MC | Page: 1 of 1 |
| Customer No: 55142 | Salesperson: |
| Ship Via: EMAIL | Ship Code: 08-SEP-04 |
| Order No: 154118405 | Order Date: |
| Purchase Order No: 6424*****0004 | |

OK Cancel Changes

A PDF generated from data captured on a web-based form

© Aspose Pty Ltd. All rights reserved. www.aspose.com