

# CASE STUDIES

## FLIGHTMAP Case Study



### FLIGHTMAP

Using Aspose Total for .NET to enable FLIGHTMAP Office functionality

Jac Goorden, CTO, June 2018

## About Bicare

Bicare is a Dutch software company that develops and delivers the FLIGHTMAP portfolio management solution. FLIGHTMAP is a leading, web-based platform for portfolio management in high-tech, innovation, real estate and other domains. It is in the market since 2010 and is constantly being updated to reflect progress in portfolio management best practices, as well as data analytics.

We have a small development team that builds new versions of FLIGHTMAP, extending its capability and supporting the user community. The main challenge for our team is make the best use of our development staff by properly choosing “make-or-buy” for all functionality in the rich FLIGHTMAP environment.

More information about FLIGHTMAP is available on [www.flightmap.com](http://www.flightmap.com).

## Problem

FLIGHTMAP offers strategic portfolio management support. The typical environment in which the portfolio data and analyses are gathered and shared is the Office ecosystem:

- Data is collected, consolidated, and analysed in spreadsheets
- Intelligence and status reports are available in Word and PDF text documentation
- Discussions and decision support is via slide decks in PowerPoint format

By bringing consistent source data management, version and access control, and interactive analytics (what-if), FLIGHTMAP enriches the decision process and increases its efficiency and effectiveness. However, embedding FLIGHTMAP in this process means it must interface conveniently with the existing Office documentation:

- importing and exporting data from Excel
- creating PowerPoint and Word reports in addition to the on-screen analytics

In line with the FLIGHTMAP easy to use promise, this functionality should be available to end users without programming skills for building high-quality Office reports quickly.

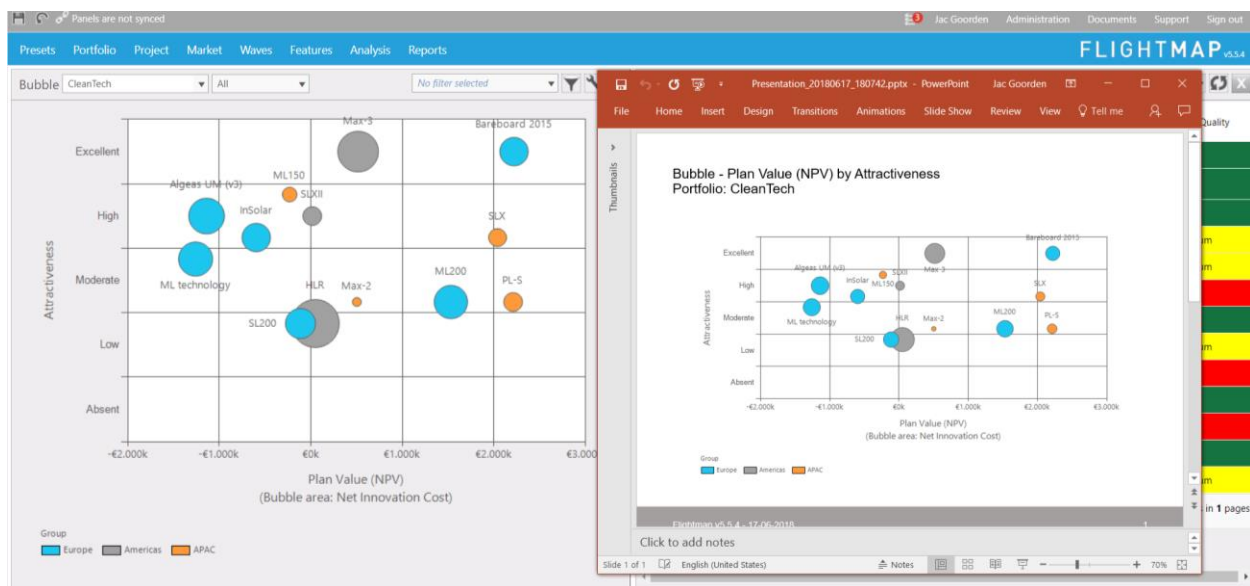


Figure 1: FLIGHTMAP brings its online interactive charts WYSIWYG to PowerPoint

Hundreds of users around the world need this reporting support in their FLIGHTMAP environment, so the reliability to cope with their specific Office locale settings must be properly addressed.

## Solution

We have built a reporting feature into the FLIGHTMAP web application where users can click and point to charts, lists, and other data elements with one click. Then, our software builds the Powerpoint or Word document for them using the right calls to the Aspose API's. For the Excel export, users do not even need to point and click: whenever a grid is on-screen, its content can be exported with one click to Excel.

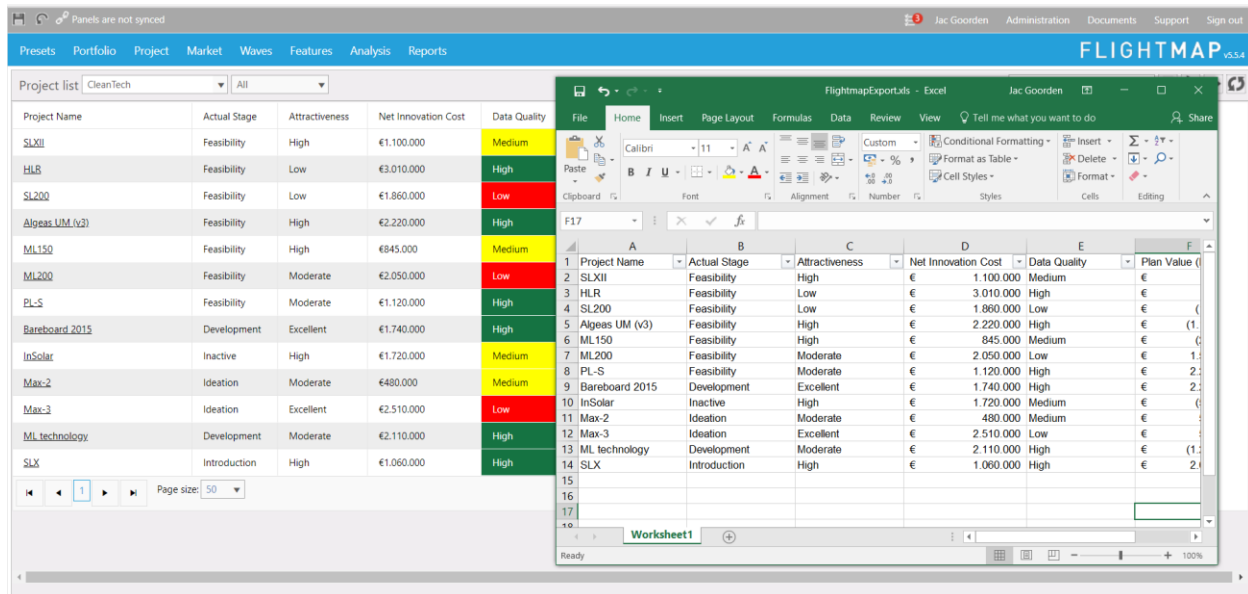


Figure 2: Exporting grid data to Excel with a single click (importing also supported).

## Experience

**Finding a solution:** After some initial investigations revealed the complexity of the Office document environment, we decided to look for a proven solution that addresses this for us. We found Aspose Total for .NET since it was referenced as a top-end solution in various developer forums. The trial license allowed us to test its match with our needs very well, and we found it offers a convenient and well-documented and abstracted API and robust and future-proof implementation.

**Implementation:** We have chosen to let one of our developers create and own the reporting module in FLIGHTMAP and the associated Aspose tooling. This turned to be a useful set-up; the support available allowed us to focus on the FLIGHTMAP added value.

**Outcome:** We ended up with a highly robust and maintainable Office interaction capability in FLIGHTMAP.

## Next Steps

Our next steps are to keep our reporting up-to-date with the growing functionality in FLIGHTMAP, and extend the series of charts we generate and need to bring to PPT and Word. We rely on Aspose to be the professional interface to Office.

## Summary

In short, we are more than pleased with the functionality and quality of the Aspose. We have been using Aspose for quite some time now, and we have not run into a single Aspose-related bug. This allows us to focus our constrained development team's effort on the application functionality instead of the details of interaction with the Office file formats. This point alone makes the product value for money. We therefore recommend it to anyone who needs professional Office interaction capability in their .NET applications.

For more information, contact:

Jac Goorden

CTO FLIGHTMAP

Luchthavenweg 18c

5611 EB Eindhoven

Netherlands

[www.flightmap.com](http://www.flightmap.com)