

Product Information

Introducing Aspose.Cells for SharePoint



Welcome to the Aspose.Cells for SharePoint Documentation!

Aspose.Cells for SharePoint is a flexible solution supporting spreadsheet conversion that makes it possible to convert MS Excel documents within the Microsoft SharePoint applications and support multiple document formats, such as:

- PDF - Adobe Portable Document
- XLS – MS Excel 97~2003
- XLSX – Office Open XML
- TXT - Plain Text
- XML - Microsoft Excel SpreadsheetML
- ODS - OpenDocument

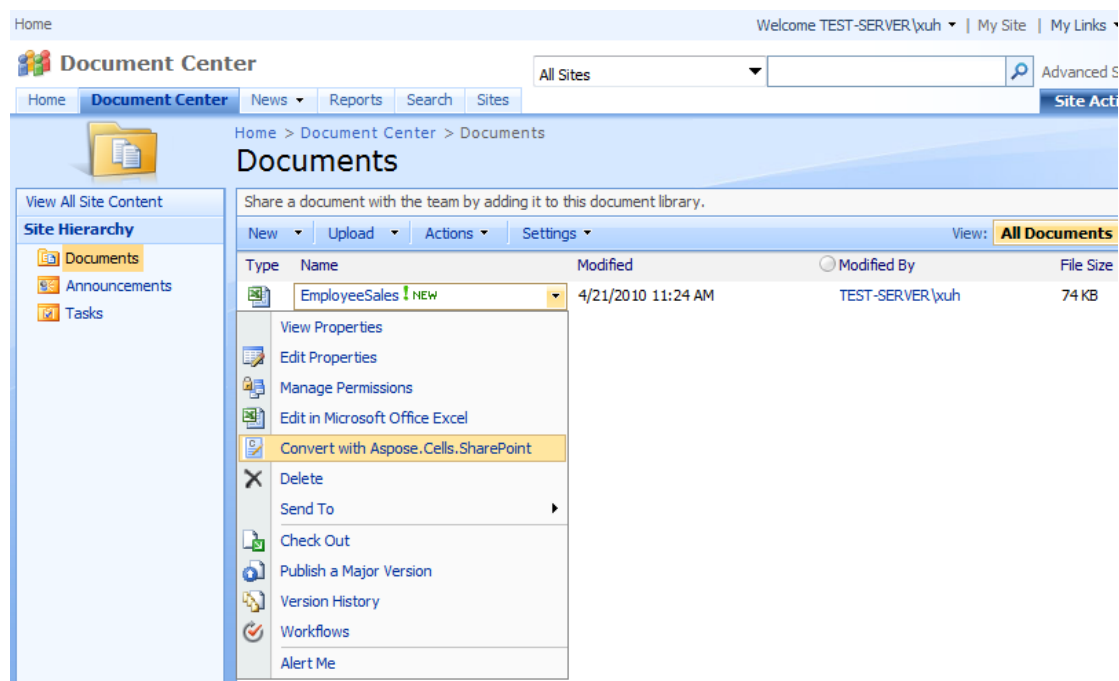
Aspose.Cells for SharePoint is designed to be used with the following products:

- Windows SharePoint Services 3.0 (WSS)
- Microsoft Office SharePoint Server 2007 (MOSS) Standard
- Microsoft Office SharePoint Server 2007 (MOSS) Enterprise

There are no additional system requirements besides ones, which exist for the products above.

Please read on to learn more. This documentation describes the features, installation, evaluation, licensing, common use cases and settings of Aspose.Cells for SharePoint.

You can use Aspose.Cells for SharePoint right from your SharePoint's document library to convert a particular document:



Features

Multiple formats support

Having Aspose.Cells for SharePoint installed you can convert documents right from your SharePoint document library between many popular office document formats and most of the conversions will be done with high fidelity and precision.

Currently Aspose.Cells for SharePoint supports the following input formats:

- XLS – MS Excel 97~2003
- XLSX – Office Open XML
- XLSM,XLTX, XLTM – Office Open XML
- CSV - Comma Separated Values Worksheet Document
- ODS - OpenDocument
- XML - Microsoft Excel SpreadsheetML

To generate documents, Aspose.Cells for SharePoint relies on a built-in version of [Aspose.Cells for .NET](#), the market leading spreadsheet-processing component from Aspose, thanks to the high degree of support for the underlying file formats, provided by Aspose.Cells. Microsoft Excel is **not** used to generate documents.

The full list of output formats supported by Aspose.Cells for SharePoint is below:

- XLS – MS Excel 97~2003
- XLSX – Office Open XML
- CSV - Comma Separated Values Worksheet Document
- HTML – HTML Workbook Page
- ODS - OpenDocument

- PDF - Adobe Portable Document
- XML - Microsoft Excel SpreadsheetML
- TXT - Plain Text

Home > Document Center

Welcome TEST-SERVER\yuh | My Site | My Links

Document Center

Home Document Center News Reports Search Sites Site Actions

Home > Document Center > Aspose.Cells.SharePoint

Aspose.Cells.SharePoint Conversion Settings Version 1.0.0.0

Source File

Source file to convert:
/Docs/Documents/EmployeeSales.xls

Destination File

Convert to:

- Pdf
- Html
- Csv
- Txt
- Ods
- SpreadsheetML
- Excel 2003
- Excel 2007

.pdf

Convert Cancel

World Class Free Technical Support

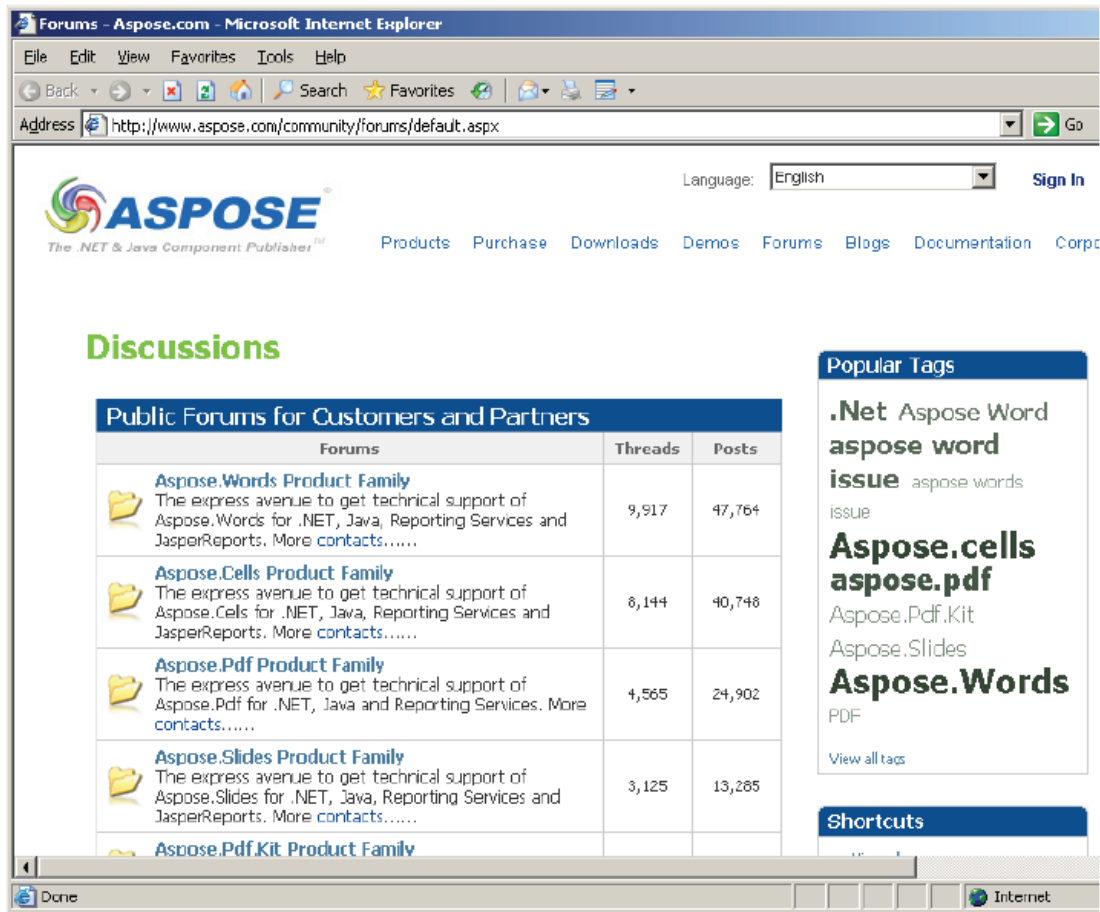
Aspose is renowned for its free and unlimited technical support provided directly by the developers of the products.

If there is a new version of a product available, or if resolving a question results in a fix in the product, all new releases are free if you have an active subscription.

[Aspose.Support Forums](#) is the place to not only resolve technical issues, but also to participate in development discussions with the vibrant and growing community of Aspose users. Currently there are over 50,000 users registered at the Aspose website.

[Aspose.Blogs](#) is the place to look for information about latest releases and about what Aspose developers have to say.

There is plenty of activity in the Aspose.Support Forums.



Install Aspose.Cells for SharePoint

System Requirements

Server Requirements

To install Aspose.Cells for SharePoint you need a computer running one of the following:

- Windows SharePoint Services 3.0
- Microsoft Office SharePoint Server 2007

Installing Service Pack 2 or later updates for these products is recommended.

Client Requirements

You need a browser to access SharePoint sites. The following browsers were checked with Aspose.Cells for SharePoint:

- Microsoft Internet Explorer 6, 7, 8
- Mozilla FireFox 3.5
- Google Chrome 3
- Safari 4

Installing Aspose.Cells for SharePoint

Aspose.Cells for SharePoint is downloadable as Aspose.Cells.SharePoint.zip archive.

This archive contains:

- Aspose.Cells.SharePoint.wsp
SharePoint solution file. Aspose.Cells for SharePoint is packaged as a SharePoint solution to facilitate deployment/retraction and feature activation/deactivation across the server farm.
- Aspose_LicenseAgreement.rtf
End user license agreement
- Aspose.Cells for SharePoint.pdf
User documentation
- Aspose.Cells for SharePoint Documentation.chm
User documentation with Public API reference
- setup.exe
Setup program
- setup.exe.config
Setup configuration file

The setup program checks the following conditions before proceeding:

- WSS 3.0 or MOSS 2007 is installed.
- The user has permission to install SharePoint solutions.
- SharePoint database is online.
- WSS Administration service is started.
- WSS Timer service is started.

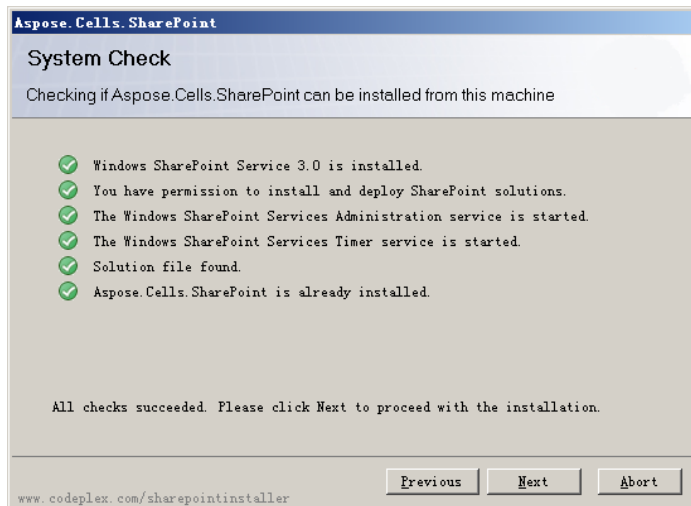
WSS Administration service and Timer service are needed because some setup actions rely on a timer job to propagate to all servers in the server farm.

To install Aspose.Cells for SharePoint:

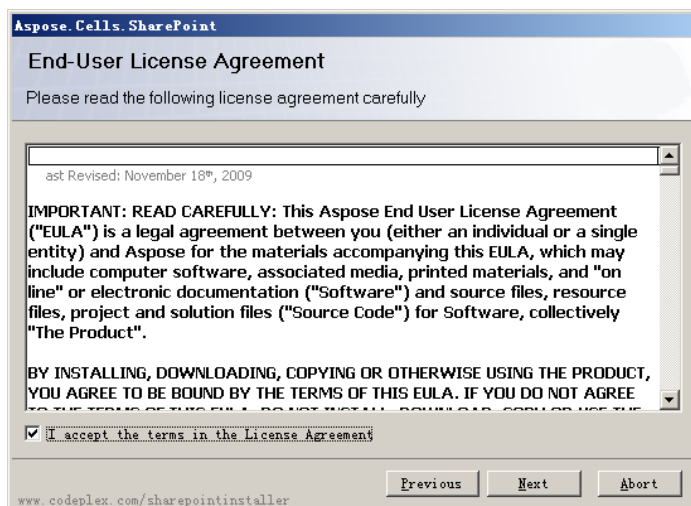
- Unpack Aspose.Cells.SharePoint zip to the local drive on the MOSS 7.0 or WSS 3.0 server.
- Run setup.exe and follow the instructions on the screen.

The setup program performs the following actions:

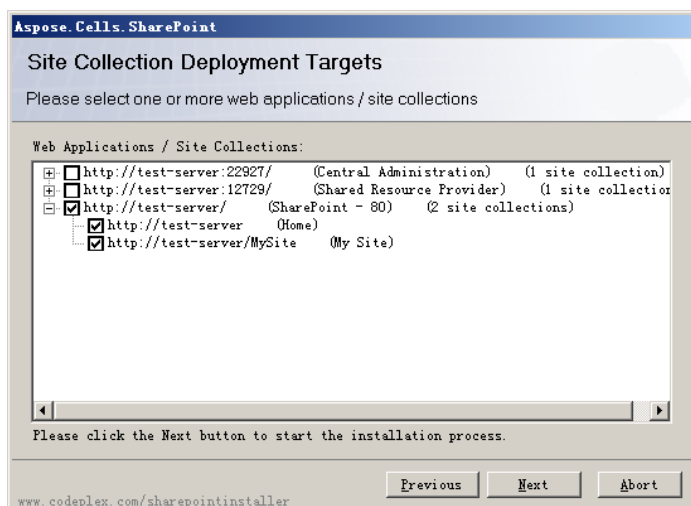
- Check installation prerequisites. Setup will not continue if any check fails.



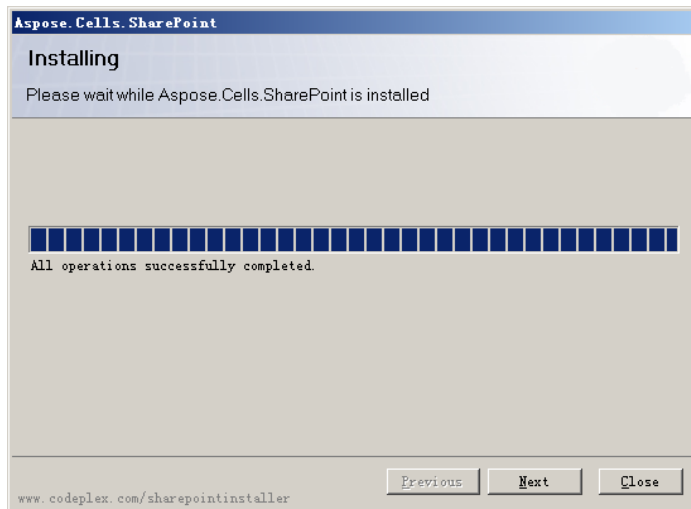
- Display End User License Agreement. The user must accept the agreement in order to proceed.



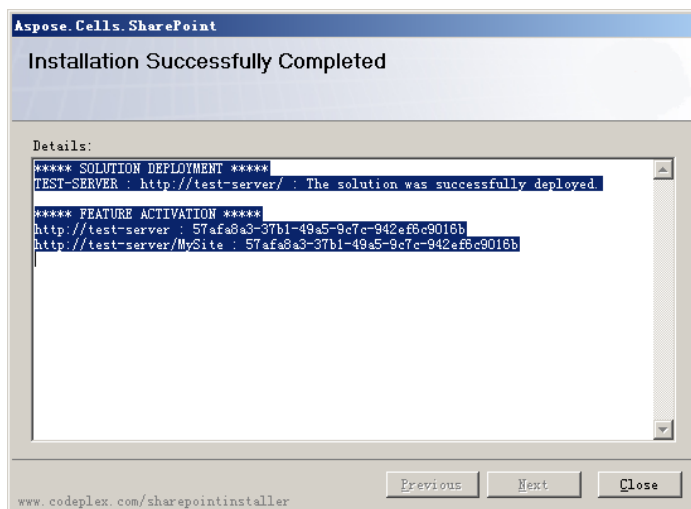
- Display deployment target selection dialog. The user selects web applications and site collections where the feature shall be activated. See the figure below.



- Deploy the feature to the server farm.



- Activate the feature for the selected site collections and configure their parent web applications.
- Display a list of web applications and site collections where the feature has been deployed and activated.



More installation details

Deployment

Aspose.Cells for SharePoint performs the following actions during deployment:

- Install Aspose.Cells.SharePoint.dll into Global Assembly Cache and add SafeControl entry to the web.config file.
- Install feature manifest and other necessary files to the appropriate directories.
- Register the feature in the SharePoint database and make it available for the activation at the feature scope.

Activation

Aspose.Cells for SharePoint is packaged as a site (site collection) level feature and can be activated and deactivated on site collections.

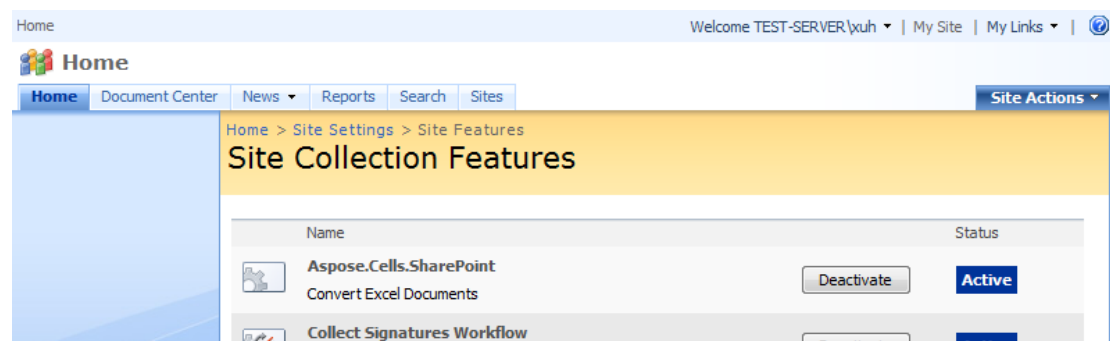
During activation, the feature makes some changes to the virtual directory of the parent web application of the site collection:

- Add conversion settings page to the sitemap file
- Copy necessary resource files to the App_GlobalResources folder in the virtual directory

Activation and Deactivation after installation

During installation, Aspose.Cells for SharePoint is activated for all selected site collections. After installation, you can use Site Actions menu at the root web site of a site collection to activate and deactivate Aspose.Cells for SharePoint.

Activating Aspose.Cells for SharePoint on a site collection.



A known issue regarding permissions to the personal site collections

SharePoint by default does not grant full permissions to manage personal sites to portal administrators. That is why activation and deactivation on a personal site collection might fail when it is performed by portal administrators. This includes activation and deactivation during setup. When this issue occurs during installation, `UnauthorizedAccessException` at `Microsoft.SharePoint.SPFeature.Activate()` is logged to the SharePoint trace log when deactivation fails as a part of un-installation, `UnauthorizedAccessException` is displayed on the last setup screen for the failed deactivation(s).

To prevent this issue, you can grant portal administrators the permission to manage MySite Web application by following the steps given below:

- Go to SharePoint Central Administration and select Application Management tab.
- Choose "Policy for Web Application" under the "Application Security" group.
- Make sure you select the correct Web Application for your "My Site" in the "Web Application" drop down list on the right.
- Select "Add Users" on the upper left.
- Choose "All Zones" by default on the "Add Users" screen and click "Next".
- Add the appropriate user(s) or Active Directory group that you want to have control over your "My Site" Web Application. Select the level of control. Click "Finish".

Granting permission to the personal sites.

The screenshot shows the 'Add Users' page in the Central Administration console. The breadcrumb trail is: Central Administration > Application Management > Policy for Web Application > Add Users. The page is divided into several sections for configuring user permissions for a specific web application.

Web Application	
Web Application:	http://sharepoint:1972/
Zone:	Zone: (All zones)
Choose Users	Users:
You can enter user names, group names, or e-mail addresses. Separate with semi-colons.	BUILTIN\administrators
Choose Permissions	Permissions:
Choose the permissions you want these users to have.	<input checked="" type="checkbox"/> Full Control - Has full control. <input type="checkbox"/> Full Read - Has full read-only access. <input type="checkbox"/> Deny Write - Has no write access. <input type="checkbox"/> Deny All - Has no access.
Choose System Settings	<input type="checkbox"/> Account operates as System
System accounts will not be recorded in the User Information lists unless the account is directly added to the permissions of the site. Any changes made by a system account will be recorded as made by the system instead of the actual user account.	

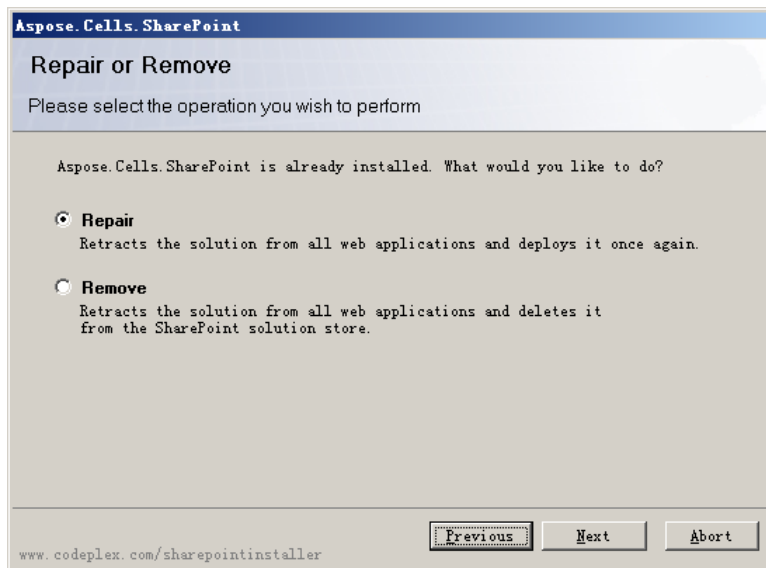
At the bottom right, there are '< Back' and 'Finish' buttons.

Uninstalling Aspose.Cells for SharePoint

To uninstall Aspose.Cells for SharePoint, just run the setup program. If Aspose.Cells for SharePoint is already installed, the setup program suggests removing or repairing it.

Please note that "Repair" option does not re-activate Aspose.Cells for SharePoint for any site collections. The feature must be activated manually after re-deployment with "Repair" option. Uninstalling using "Remove" option and then installing back again may be more convenient as it allows selecting target web applications and site collections during installation.

Choose "Remove" option to uninstall the feature.



During un-installation the setup program deactivates Aspose.Cells for SharePoint feature for all site collections and retracts the solution from the server farm.

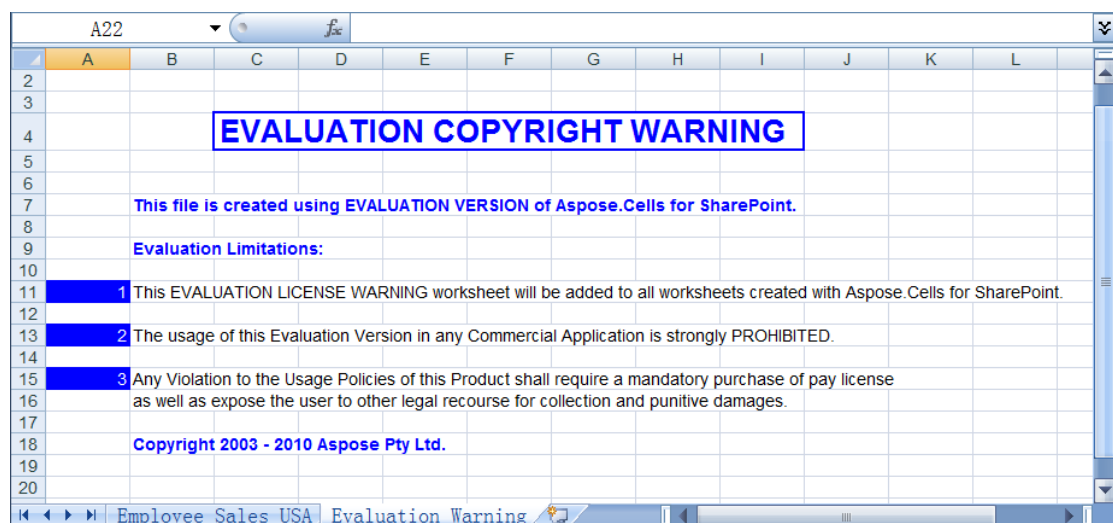
Evaluate Aspose.Cells for SharePoint

Make sure to take advantage of the free Aspose.Cells for SharePoint evaluation as it has no time limit, and free technical support is provided for evaluation users too.

It is the same download for both the evaluation and the paid version of Aspose.Cells for SharePoint. Simply download Aspose.Cells for SharePoint from the download page, install it and it will work in the evaluation mode by default.

Evaluation mode injects an Evaluation Warning into exported documents. When you have purchased a license, simply install the license solution over installed evaluation copy of Aspose.Cells for SharePoint and it will then work in the licensed mode.

Aspose.Cells for SharePoint injects an Evaluation Warning when working in the evaluation mode.



License Aspose.Cells for SharePoint

Installing Aspose.Cells for SharePoint License

Once you are happy with your evaluation, you can [purchase a license](#). Before purchasing make sure you understand and agree to the license subscription terms.

The license will be emailed to you after the order has been paid. The license is a .zip archive containing a regular SharePoint solution package.

This archive contains:

- Aspose.Cells.SharePoint.License.wsp

SharePoint solution package file. Aspose.Cells for SharePoint License is packaged as a SharePoint solution to facilitate deployment/retraction across the server farm.

- readme.txt

License installation instructions. License installation is performed from the server console via stsadm.exe. The steps required to install the license are given below.

Note: The paths are omitted for clarity. You may need to add the actual path to stsadm.exe and/or solution file when executing them.

1. Run stsadm to add the solution to the SharePoint solution store:

```
stsadm.exe -o addsolution -filename Aspose.Cells.SharePoint.License.wsp
```

2. Deploy the solution to all servers in the farm:

```
stsadm.exe -o deploysolution -name Aspose.Cells.SharePoint.License.wsp -immediate -force
```

3. Execute administrative timer jobs to complete the deployment immediately

```
stsadm.exe -o execadmsvcjobs
```

Note: You will receive a warning when running deployment step if Windows SharePoint Services Administration service is not started. Stsadm.exe relies on this service and Windows SharePoint Timer Service to replicate solution data across the farm. If these services are not running on your server farm, you may need to deploy the license at each server.

Testing a License

To test that a license has been installed correctly, convert any document into desired format. If the document contains no Evaluation Warning, the license was activated successfully.

Uninstalling Aspose.Cells for SharePoint License

To uninstall Aspose.Cells for SharePoint license, please use the steps below from the server console.

1. Retract the license solution from the farm:

```
stsadm.exe -o retractsolution -name Aspose.Cells.SharePoint.License.wsp -immediate
```

2. Execute administrative timer jobs to complete the retraction immediately:

```
stsadm.exe -o execadmsvcjobs
```

3. Wait for the retraction to complete. You can use Central Administration to check if the retraction completed under Central Administration -> Operations -> Solution Management

4. Remove the solution from the SharePoint solution store:

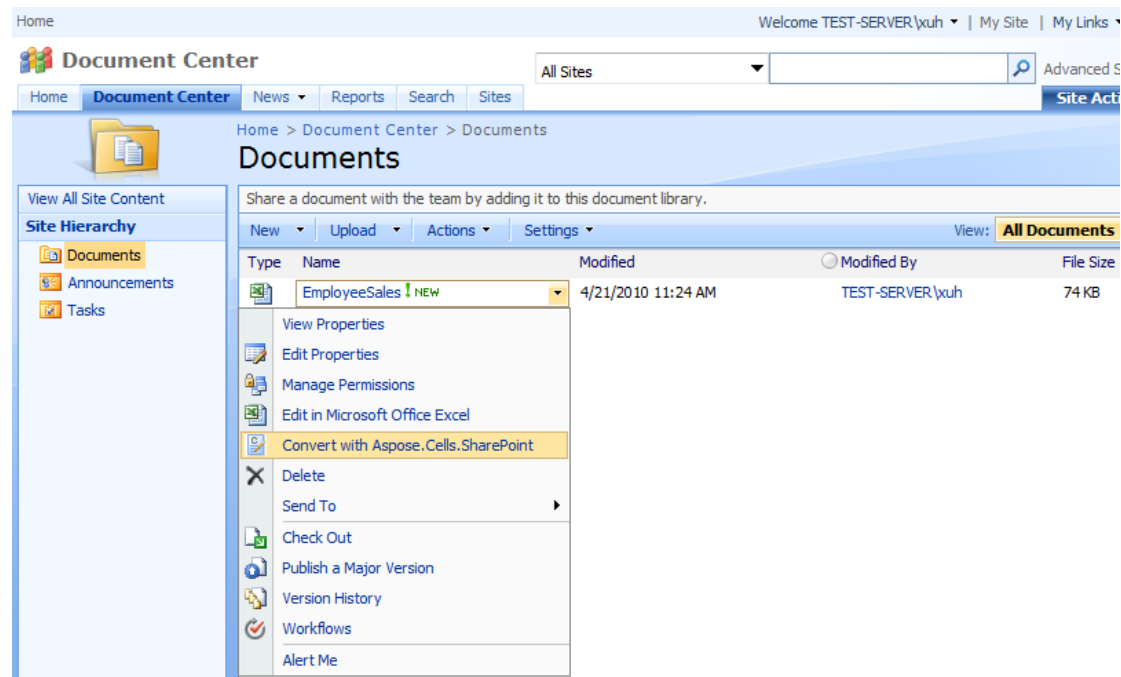
stsadm.exe -o deletesolution -name Aspose.Cells.SharePoint.License.wsp

User's Guide

Convert One File

To convert a particular document in a document library please choose "Convert with Aspose.Cells.SharePoint" item in the document's Edit Control Block (ECB).

Selecting "Convert via Aspose.Cells" item in the document's ECB.



This will lead you to conversion settings screen that allows tuning of the following options:

"**Convert to**" dropdown list selects desired destination file format.

"**Destination file**" edit box allows entering the name of destination file. By default, Aspose.Cells for SharePoint pre-populates this field with the name of the source file. But you can change it if needed. The extension is added automatically depending on the selected format.

"**Convert**" button launches conversion process.

"**Cancel**" button gets you back to the library and dismisses all changes in settings.

Conversion Settings screen for one file conversion.

Home > Document Center

Welcome TEST-SERVER\yuh | My Site | My Links |

Document Center

Home Document Center News Reports Search Sites Site Actions

Home > Document Center > Aspose.Cells.SharePoint

Aspose.Cells.SharePoint Conversion Settings

Version 1.0.0.0

Source File	Source file to convert: /Docs/Documents/EmployeeSales.xls
Destination File	Convert to: Pdf Destination file: EmployeeSales.pdf Destination folder: /Docs/Documents

Convert Cancel

Public API

Customers developing their own SharePoint solutions can have an access to our conversion engine via public API. This includes all supported file formats and conversion options. The detailed interface specifications in our [API Reference](#) is accompanied with different C# and VB samples.